

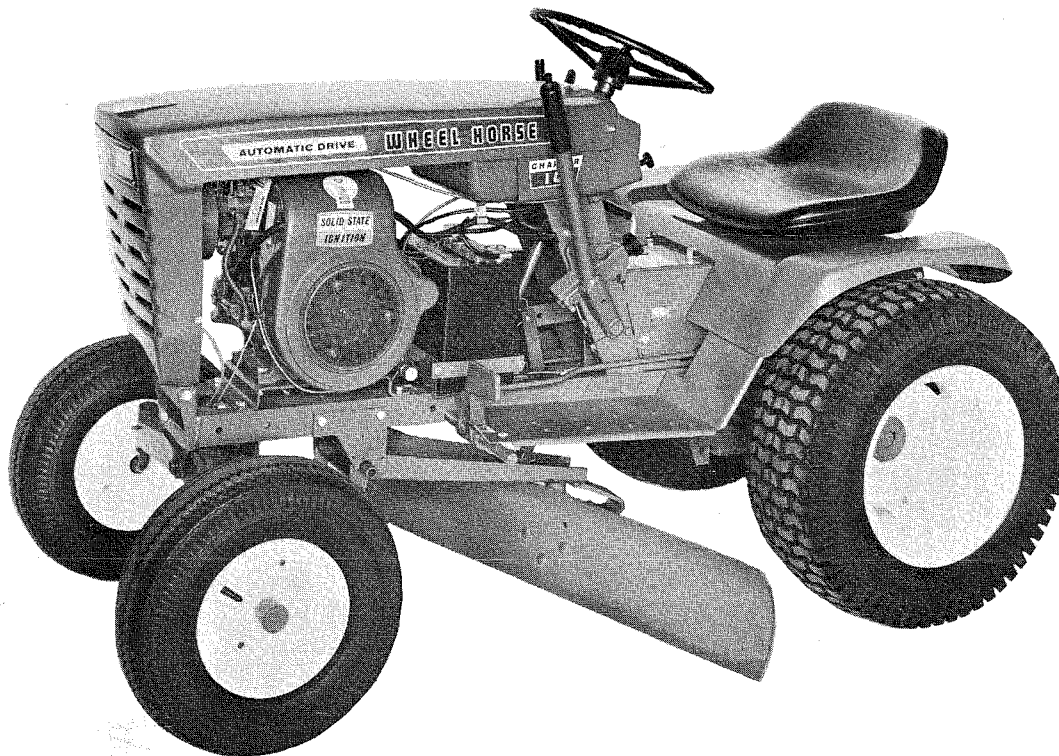
## PARTS LIST AND INSTRUCTIONS



*Wheel Horse*

WHEELHORSE PRODUCTS, INC. • SOUTH BEND, IND.

## MID-MOUNTED GRADER BLADE MODEL 7-1112



### DESCRIPTION:

The Blade is shipped complete in one carton: There are three (3) main parts in the carton: The Blade Assembly, Frame Assembly, and Hardware Package. Hardware is provided to fit two series of tractor models, the horizontal shaft engine models and the vertical shaft engine models (Charger V7 & V8 — Commando V7 & V8). On horizontal shaft engine models the grader blade is attached by use of the 8-5211 speed hitch. **NOTE:** Any speed hitch provided with rotary mowers can also be used. The 8-5211 speed hitch is **not** included with this attachment.

### ASSEMBLY:

1. Remove contents from carton and place on a clean flat surface.
2. Place the shaft of the blade support, Part No. 8838, through the tube in the frame assembly, Part No. 8835, and secure with the "E" ring. **NOTE:** It is advised that a coat of grease be applied to the shaft before assembly.
3. Attach a lift link to the lift lug of the frame. The longer lift link is used for all horizontal shaft engine model tractors. (Short bend of the link fits on the blade frame.) The short link is used on all vertical shaft tractors. (Welded pin end fits on the blade frame.) Secure with the hairpin cotter.

### MOUNTING:

1. Mount the 8-5211 speed hitch to horizontal shaft engine tractors as per instruction enclosed.
2. Turn the tractor wheels to the left and slide the unit under the tractor from the right side.
3. To mount the frame to the tractor proceed as follows:

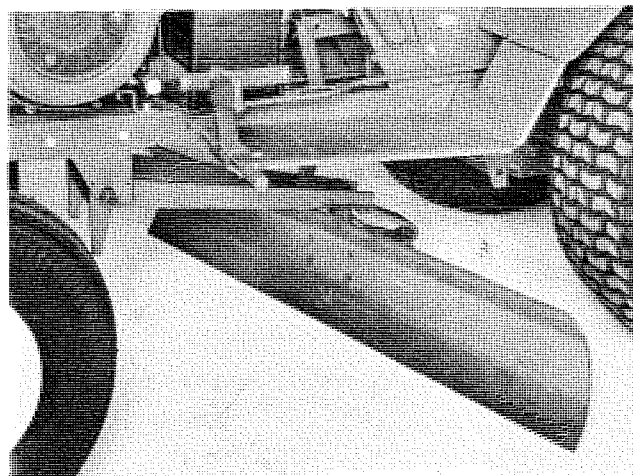


FIGURE I

### HORIZONTAL SHAFT ENGINE MODELS

1. Place the frame cross shaft into the speed hitch grooves and close latch. See Figure 1.
2. Place the hairpin cotter into the hole on the left hand plate to keep the latch from backing off.

### VERTICAL SHAFT ENGINE MODELS

1. Place the frame cross shaft up in between the tractor frame to line up with the attachment pivot holes.
2. Slide the tractor attachment pivot pin through the frame and the frame cross shaft. Secure in place with the hairpin cotters.
4. Connect the lift link to the tractor as follows:

### HORIZONTAL SHAFT ENGINE MODELS

1. Insert the pin of the lift link through the end hole of the tractor lift arm.
2. Secure with the hairpin cotter.

### VERTICAL SHAFT ENGINE MODELS

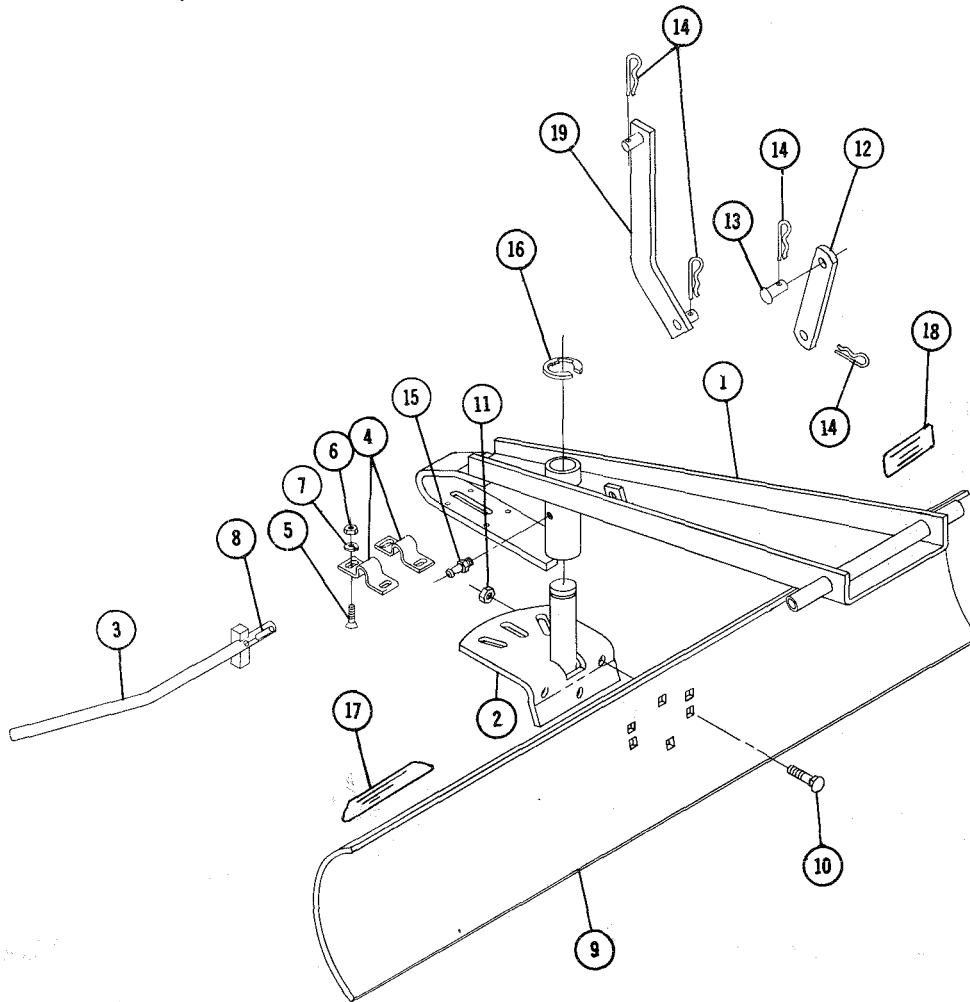
1. Line up the hole of the lift link with the upper front hole of the tractor lift arm.
2. Insert the clevis pin and secure with the hairpin cotter.

### OPERATION:

The blade is adjustable and may be locked in three different positions: Straight, right angle, and left angle. These adjustments are made by pulling up on the angle adjusting rod (located at the rear of the Frame Assembly) and then turning the blade by hand right or left, now release the rod which will lock blade into position. Down pressure should be applied by pushing down on tractor Lift Lever. (**Caution: Do Not Use Feet to Put Down Pressure on Blade.**)

Light weight oil should be applied to all moving parts before operation and after every 10 hours of use, also grease after every 10 hours of use.

**Caution:** Avoid hitting solid objects with corners of blade.



PARTS LIST FOR 7-1112 MID-MOUNTED GRADER BLADE

Item No.	Part No.	Description	No. Req'd.	Item No.	Part No.	Description	No. Req'd.
1	8835	Frame Assembly	1	11	915663-4	Nut $\frac{3}{8}$ -16 Elastic Stop	3
2	8838	Blade Support	1	12	8840	Lift Link - Vertical Engine	1
3	8832	Rod - Angle Adjustment	1			Shaft Tractor	1
4	6532	Bracket	2	13	932962-4	Pin	1
5	905054-4	Screw $\frac{1}{4}$ -20 x $\frac{5}{8}$ Mach. Rd. Hd. Slotted	4	14	933504-4	Hairpin Cotter	2
6	915661-4	Nut - $\frac{1}{4}$ -20 Elastic Stop	4	15	1030	Grease Fitting	1
7	920205-4	Washer	4	16	5700	"E" Ring 1" Shaft	1
8	933152	Roll Pin	1	17	5604	Decal Attachment	1
9	5680	Blade	1	18	5684	Decal Safety First	1
10	900063-4	Carriage Bolt $\frac{3}{8}$ -16 x 1	3	19	5678	Lift Link - Horizontal Engine	1
						Shaft Tractor	1