

PARTS LIST AND INSTRUCTIONS



Wheel Horse

WHEEL-HORSE PRODUCTS, INC. • SOUTH BEND, IND.

DOZER BLADE

"A" FRAME

MODELS

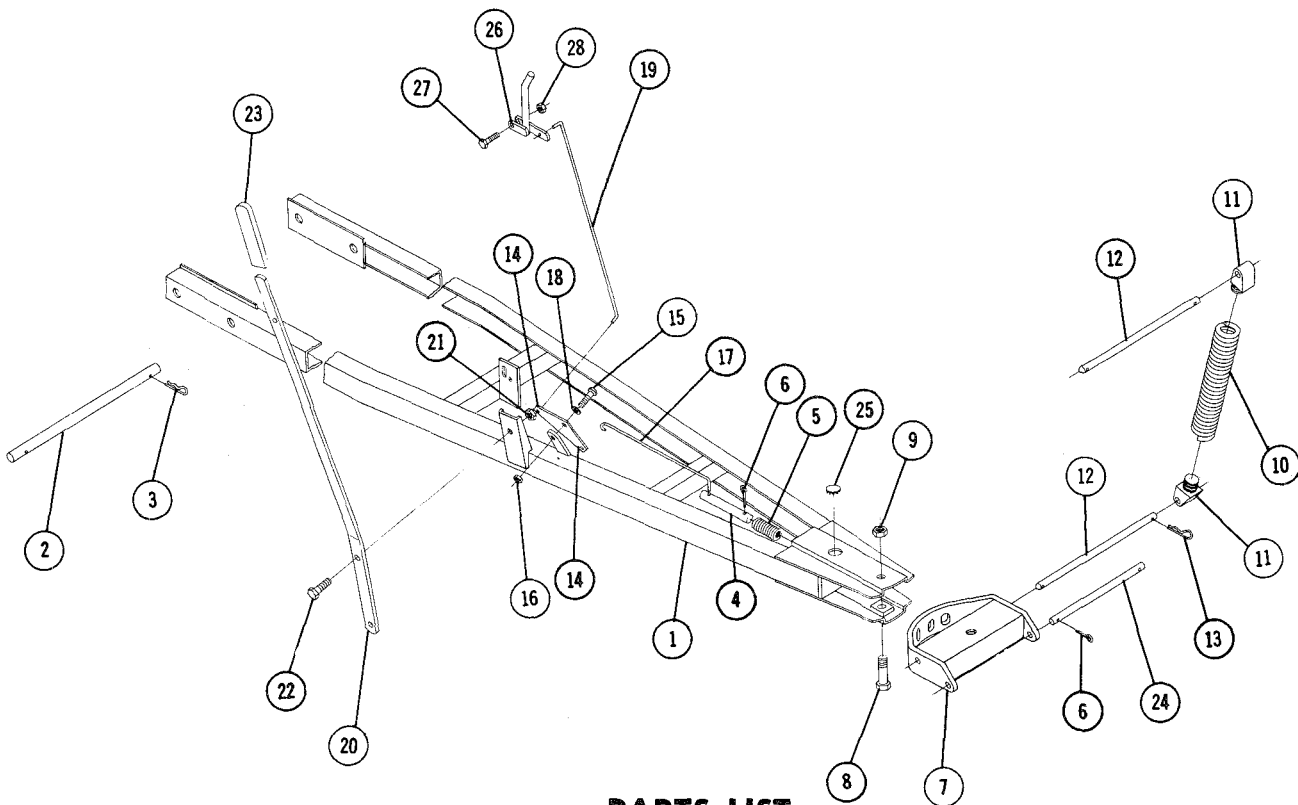
6-4112 and 6-4113

FOR USE WITH 42" OR 54" BLADES

Dozer blade attachments are shipped in two separate cartons: an "A" frame package and blade package. This carton contains the "A" frame illustrated below. In order to install it on a tractor, you must have, in addition, either the 54-inch blade No. 6-9611 or No. 6-9612, or the 42-inch blade No. 6-9621 or No. 6-9622

The 54-inch blade is for use **only** on GT-14 model tractors. The 42-inch blade adapts to all other model tractors except 1959-61 mid-mount engine models, vertical shaft engine models, and Lawn Rangers.

Complete assembly and mounting instructions are provided in the Parts list and Instructions packed with the blades.



PARTS LIST

When ordering parts always list Part No. and name of Part.

(Specifications subject to change without notice.)

Parts available only through Authorized Dealers.

Item No.	Part No.	Description	No. Req'd.
1	7716	Ass'y. Frame	1
2	7701	Shaft — Mounting	1
3	933506-4	Hairpin Cotter	2
4	5127	Pin — Index	1
5	2354	Spring	1
6	932017-4	Cotter Pin $\frac{1}{8}$ x 1	3
7	5102	Ass'y. Sector & Channel	1
8	908256-4	Bolt Hex $\frac{3}{4}$ -16 x $3\frac{3}{4}$	1
9	915640-4	Nut Hex $\frac{3}{4}$ -16 Elastic Stop	1
10	5117	Spring — Trip Return	2
11	5125	Lug	4
12	5120	Rod — Trip Pivot	2
13	933512-4	Hairpin Cotter	4
14	3770	Plate — Index	1

Item No.	Part No.	Description	No. Req'd.
15	908034-4	Bolt Hex $\frac{3}{8}$ -16 x 1	1
16	915663-4	Nut $\frac{3}{8}$ -16 Elastic Stop	1
17	3771	Rod — Lower Index	1
18	920009-4	Washer $\frac{3}{8}$ SAE	1
19	7714	Rod — Upper Index	1
20	100600	Lever — Index	1
21	915238-4	Nut Hex $\frac{1}{2}$ -13 Jam	1
22	908057-4	Bolt Hex $\frac{1}{2}$ -13 x 1	1
23	5359	Grip	1
24	4564	Rod — Lower Pivot	1
25	4944	Plug Button	2
26	5107	Ass'y. Lever	1
27	908005-4	Bolt Hex $\frac{1}{4}$ -20 x 1	1
28	915111-6	Nut — Nylok $\frac{1}{4}$ -20	1