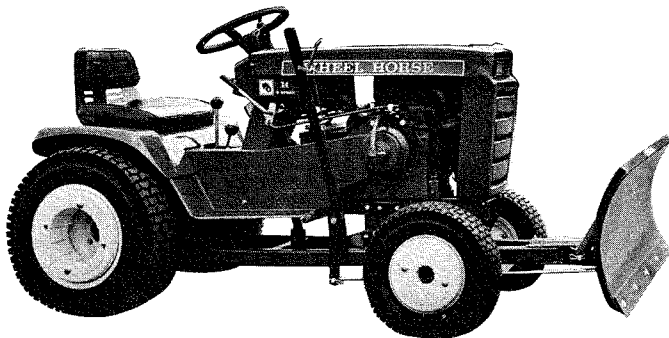


PARTS LIST AND INSTRUCTIONS

42" BLADE WITH MOUNTING ASSEMBLY

FACTORY ORDER NUMBER 6-9624



DESCRIPTION

The Dozer Blade Assembly is shipped in two separate cartons, a blade package, and an "A" frame package. This carton contains the 42" blade and must be used with "A" Frame No. 6-4114.

ASSEMBLY AND MOUNTING

1. Install the mounting bracket assembly (see Fig. 1). The bracket should be centered on the axle housing. Secure in place with the links and $\frac{3}{8}$ -16 x $3\frac{1}{2}$ " carriage bolts and $\frac{3}{8}$ -16 elastic stop nuts.

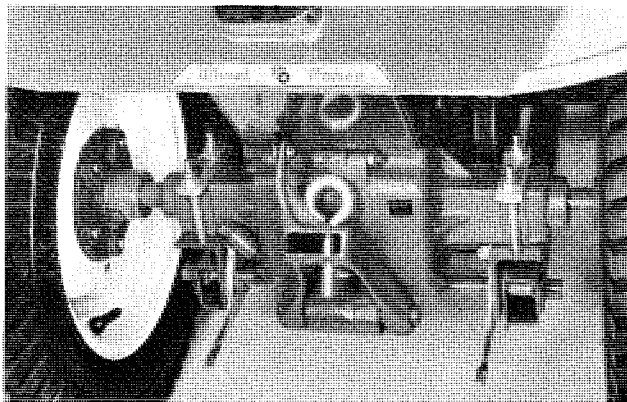


FIG. 1

Angle spacers, Part No. 7713 (Item #14 on the exploded view drawing) are used to fill the gap between the bolts and the axle housing. The spacers are not used on the Automatic Transmission tractors. See Fig. 1. The frame cross shaft fits in the end hole, as shown, on all tractors that have a $45\frac{1}{2}$ " wheel base and the Commando 800, and 1974 & 1975 B-80 & B-100. All others use the second hole.

2. Slide the frame assembly under the tractor. Insert the rear cross shaft on the frame assembly in the mounting bracket and latch. Be sure the index

lever on the frame assembly is up and out of the way before the frame is locked in position. See Fig. 1.

3. For the 1972 Commando 800 and 1973 and later models hook up lift link 105052 as shown in Fig. 3. For additional blade to ground clearance it is necessary to reposition the lift rod into the hole at the end of the lift arm as shown in Fig. 4. On older models use lift bar 7706. Fit one end of the lift bar in the second hole (hole nearest the driver) of the tractor lift arm. The other end fits into a hole or a slot on the lift plate.
4. Remove the large $\frac{3}{4}$ nut and bolt holding the pilot sector. Remove the pivot sector. The blade control rod, Part No. 104338, is inserted through the bottom of the pivot sector, and secured with the hairpin cotter. Bolt the pivot sector, Part No. 5102, to the frame assembly using the hex bolt, Part No. 908256, and Part No. 915640, elastic stop nut. (NOTE: Apply a liberal coat of grease before installing.) Install the bolt from the bottom and tighten, leaving it loose enough for the blade to swing free. See Fig. 2. Attach the control rod to the index lever.

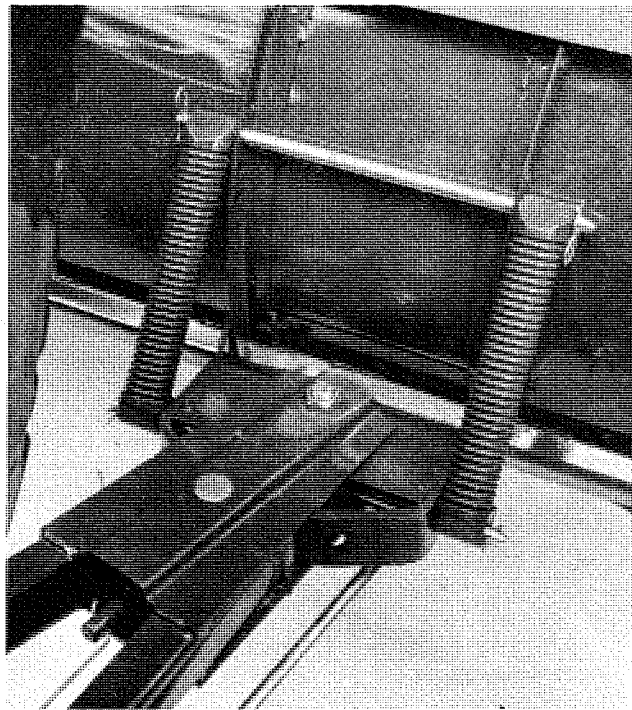


FIG. 2



WHEEL HORSE

lawn & garden tractors

5. Attach the blade assembly, Part No. 5109, to the pivot sector using Part No. 4564, lower pivot rod, and two $\frac{1}{8}$ " x 1" cotter pins, Part No. 932017. Next, install the two springs with the pivot rods, Part No. 5120. Fasten to the pivot sector first, with two of the hairpin cotters. Insert the other pivot rod in the blade angles. The angle of the blade will be determined by the hole in which the pivot rod is placed. For general use, the second hole down from the top is used. Tilt forward for earth spreading; tilt back for more aggressive action. See Fig. 2.
6. Assemble the index lever with top offset inboard for 1974 tractors and assemble reverse for 1973 and older tractors.
7. Hook wire through index plate. Thread the eyebolt over the wire, the eye toward the tractor. Fasten eyebolt in place with hardware shown.
8. Thread the trip lever over the upper rod and on the front side of the index lever. Fasten in place with hardware shown using the upper hole for 1974 models. All other models use 2nd hole down.

OPERATION

This dozer is equipped with a spring trip device. If the blade should strike a solid object, it will tilt

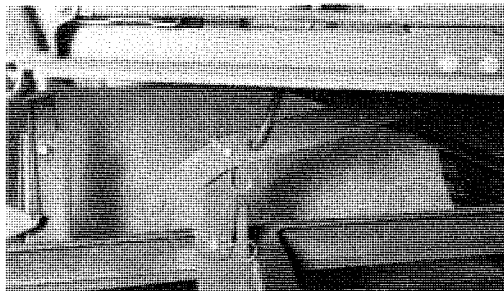


FIGURE 3

forward and slide over. The dozer blade is adjustable and may be locked in three different positions: straight, right angle, and left angle. These adjustments are easily accomplished from the tractor seat by operating the convenient turn lever. The blade is adjusted up and down with the lift lever.

Before operation, make sure that all bolts are tight and cotter pins opened. Excessive play in the pivot sector may be removed by tightening the large pivot bolt. The blade edge is reversible and replaceable. After the edge is worn, remove the five bolts securing it to the blade and turn it over, providing a new cutting edge.

In the event down pressure is required on the blade this can be accomplished by installing a $\frac{3}{8}$ -16 elastic stop nut on the lift rod below the trunnion.

A light grade of machine oil should be applied to all moving parts, before operation, and after every 10 hours of use.

Wheel weights and chains are available for each tractor model through your dealer.

⚠ CAUTION ⚠

Avoid hitting solid objects with the blade, as this could result in damage to the blade and injury to the operator.

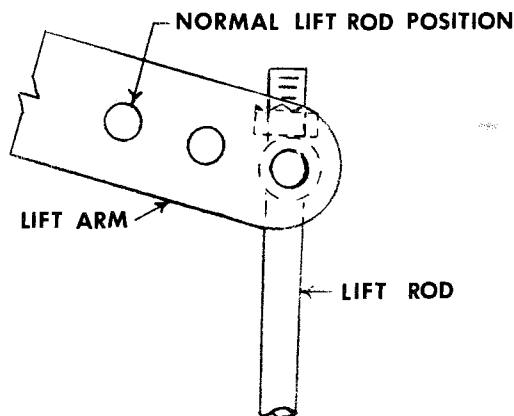
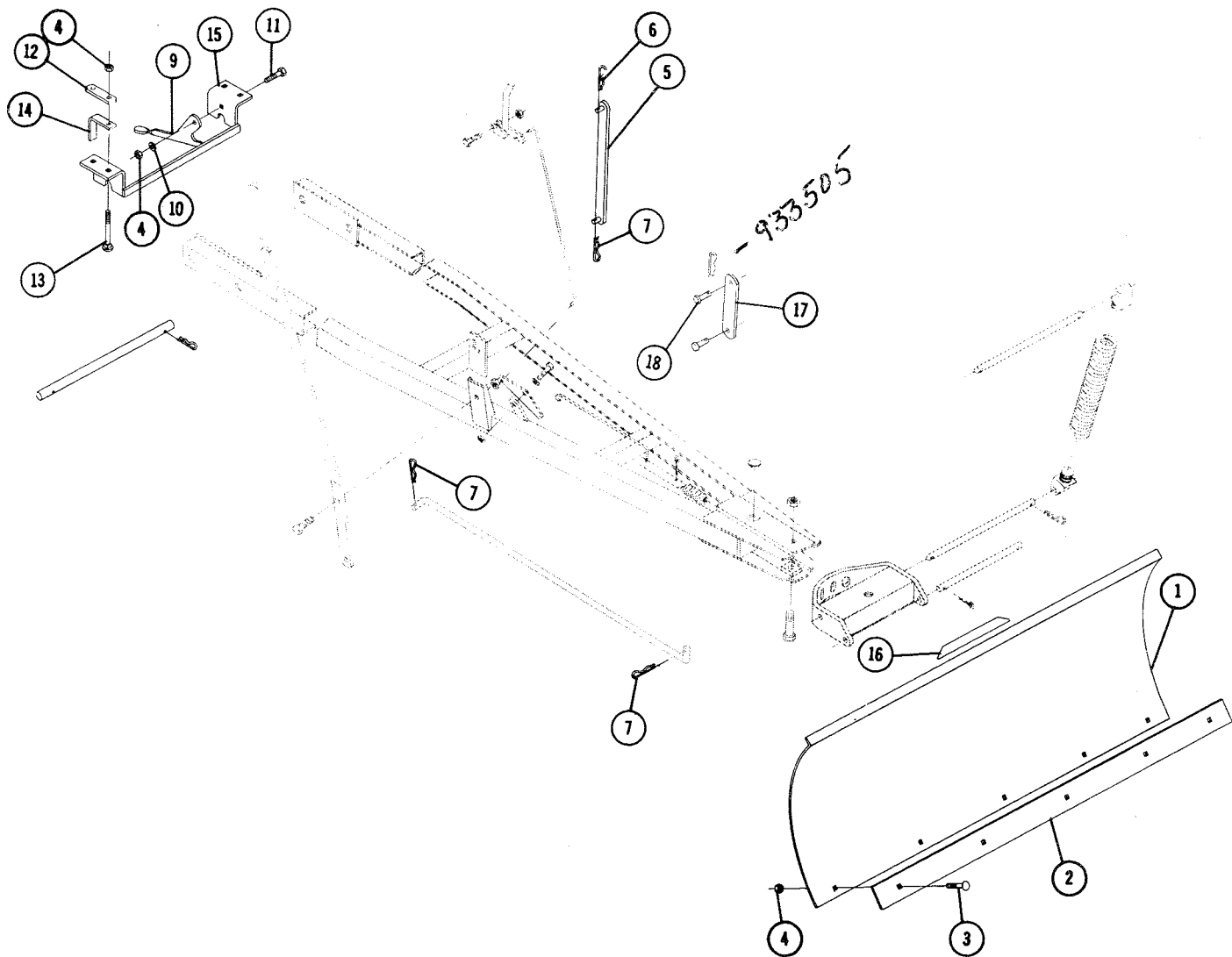


FIG. 4



PARTS LIST — 42" BLADE WITH MOUNTING ASSEMBLY
FACTORY ORDER NUMBER 6-9624

Parts available only through Authorized Dealers.
 When ordering parts always list Part No. and Description.
(Specifications subject to change without notice.)

ITEM NO.	PART NO.	DESCRIPTION	NO. REQ'D.
1	5109	Blade Assembly	1
2	2346	Blade Edge Plate	1
3	900062	Bolt — Carriage $\frac{3}{8}$ -16 x $\frac{3}{4}$	5
4	915663	Nut, $\frac{3}{8}$ -16 Elastic Stop	11
5	7706	Lift Bar Assembly	1
6	933505	Hairpin Cotter	3
7	933512	Hairpin Cotter	3
9	104657	Latching Plate	2
10	920009	Washer $\frac{3}{8}$ SAE	2
11	908034	Bolt Hex $\frac{3}{8}$ -16 x 1	2
12	3697	Link	2
13	900073	Bolt Carriage $\frac{3}{8}$ -16 x $3\frac{1}{2}$	4
14	7713	Angle Spacer	2
15	104659	Bracket Mounting Assembly	1
16	103174	Decal — Attachment	1
17	105052	Link — Short	1
18	932962	Clevis Pin	2
—	105057	Decal — Caution	1
—	103174	Decal — Wheel Horse	1



WHEEL HORSE PRODUCTS, INC. 515 West Ireland Road South Bend, Indiana 46614

PRINTED IN U. S. A. 5-75

P/L 426 PART NO. 803426