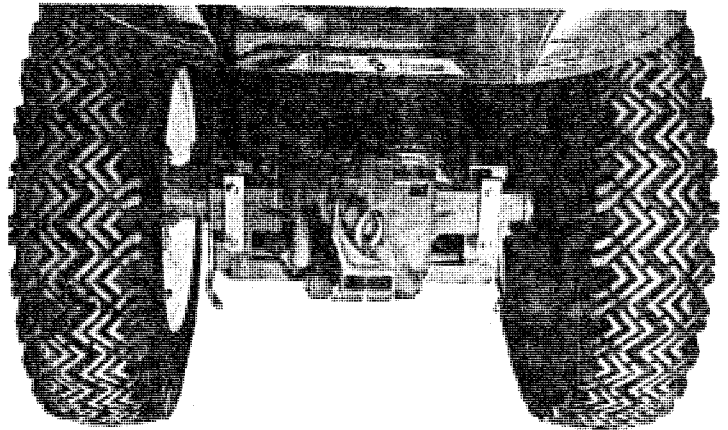
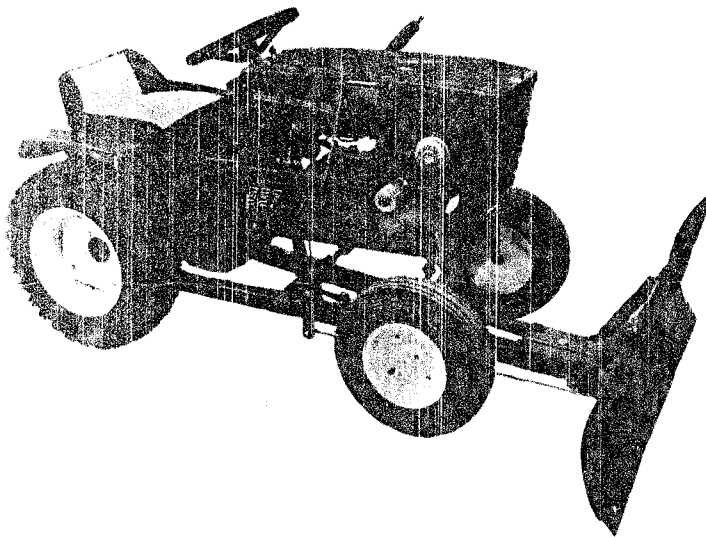


5-5-66

PARTS LIST AND INSTRUCTIONS

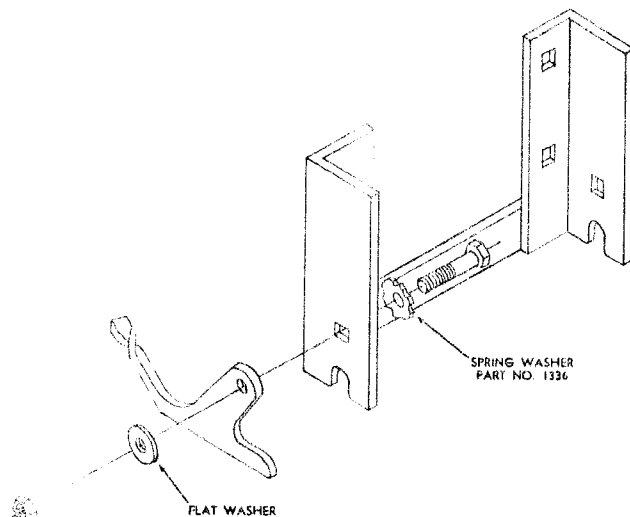


DOZER BLADE MODEL 6-2111 (Formerly BD-4267)



ASSEMBLY AND MOUNTING

1. The Blade is shipped complete in one carton. There are three main parts in the carton. The Frame Assembly, Blade Assembly, and a box of parts.
2. Remove contents from carton.
3. Assemble rear mounting bracket assembly, Part No. 5145 using Part No. 3697 Link, 900072-4 carriage bolt, and $\frac{3}{8}$ -16 nylock nuts. Install the right and left hand latching plates using Part No. 908036-4 bolt, spring washer, Part No. 1336, $\frac{3}{8}$ washer, Part No. 920009-4 and nylock nut. NOTE: Place the spring washer on the inside of the mounting bracket as shown in Figure A.



Adjust so that the latching plates are firm when in the latched position.

4. Slide the frame assembly, Part No. 5332, under the tractor. Insert the rear cross bar of the frame assembly in the mounting bracket and latch. Be sure the turn lever on the frame assembly is up and out of the way before the frame is locked in position.
5. Attach the lift bar, Part No. 5331, to the tractor lift assembly using hairpin cotter, Part No. 933505-4. Fasten the lift bar to the frame assembly using one hairpin cotter, Part No. 933512-4. NOTE: Tractors with HY-6 hydraulic unit place the lift bar into the slotted hole of the frame lift lug.
6. Bolt the Pivot Sector, Part No. 5102, to the frame assembly using the Hex Bolt, Part No. 908256-4, and Part No. 915640-4, elastic stop nut. (NOTE: Apply a liberal coat of oil before installing.) Insert the bolt from the bottom and tighten, leaving it loose enough for the blade to swing free.
7. Attach the Blade Assembly, Part No. 5109, to the pivot sector using Part No. 4564, lower pivot rod, and two $\frac{1}{8}$ " x 1" cotter pins, Part No. 932017-4. Next, install the two springs with the Pivot Rods, Part No. 5120. Fasten to the Pivot sector first, with two of the hair pin cotters. Insert the other pivot rod in the blade angles. The angle of the blade will be determined by the hole in which the pivot rod is placed. For general use, the second hole down from the top is used. Tilt forward for earth spreading; tilt back for more aggressive action.
8. The blade control rod, Part No. 4594, is inserted through the bottom of the pivot sector, and through the back side of the lever. Secure with two hair pin cotters.

OPERATION

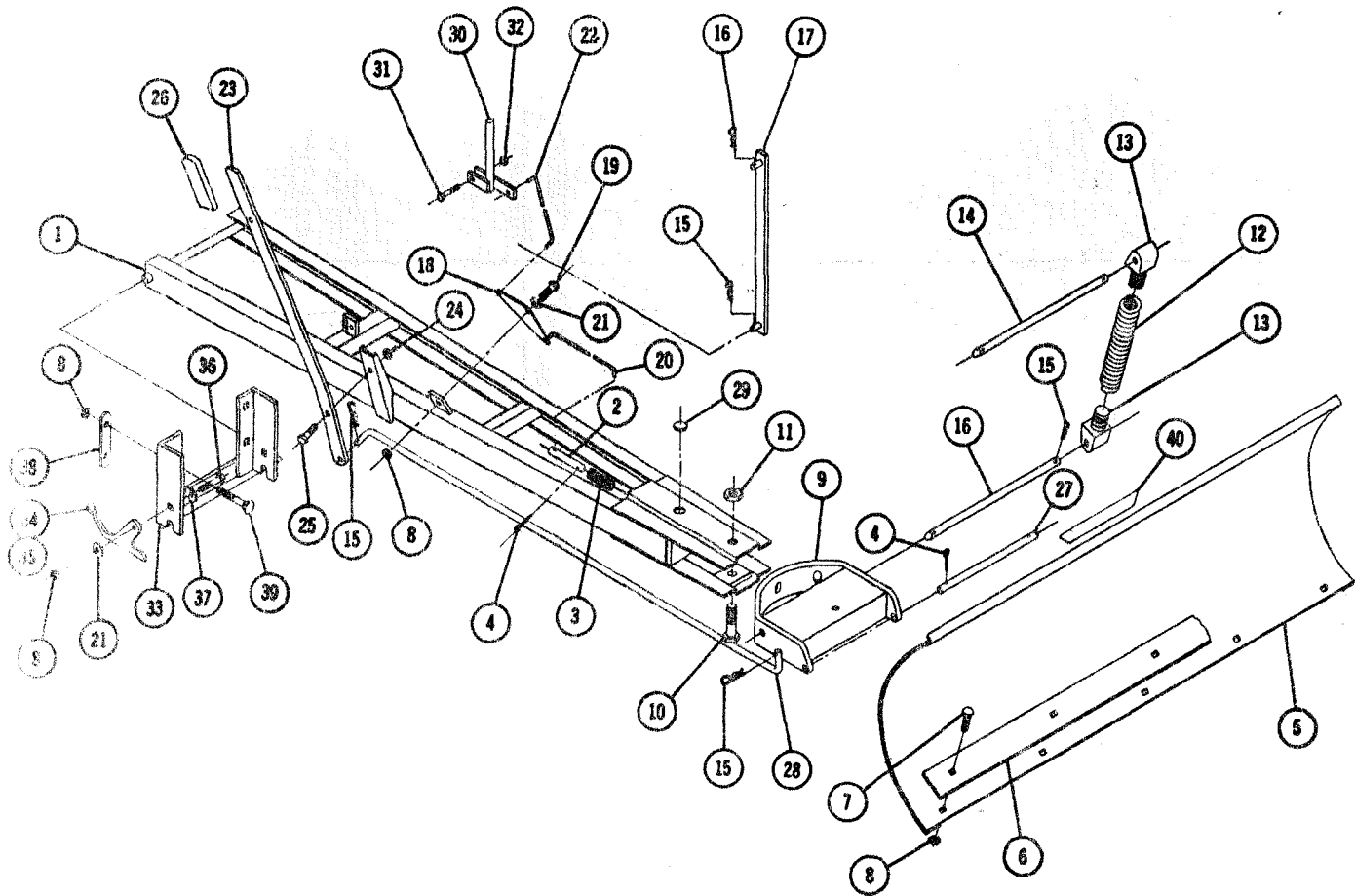
This dozer is equipped with a spring trip device. If the blade should strike a solid object, it will tilt forward and slide over. The dozer blade is adjustable and may be locked in three different positions: straight, right angle, and left angle. These adjustments are easily accomplished from the tractor seat by operating the convenient turn lever. The blade is adjusted up and down with the lift lever.

Before operation, make sure that all bolts are tight and cotter pins opened. Excessive play in the pivot

sector may be removed by tightening the large pivot bolt. The blade edge is reversible and replaceable. After the edge is worn, remove the five bolts securing it to the blade and turn it over, providing a new cutting edge.

A light grade of machine oil should be applied to all moving parts, before operation, and after every 10 hours of use.

(CAUTION: Avoid hitting solid objects with the corners of the blade, as this could result in damage.)



PARTS LIST

When ordering parts always list Part No. and name of part.

Ref. No.	Part No.	Description	No. Req'd.
1	5332	Ass'y. Frame	1
2	5127	Pin — Index	1
3	2354	Spring	1
4	932017-4	Cotter Pin 1/8 x 1	3
5	5109	Ass'y. Blade	1
6	2346	Plate — Blade Edge	1
7	900062-4	Bolt Carriage 3/8-16 x 3/4	5
8	915663-4	Nut 3/8-16 Elastic Stop	12
9	5102	Ass'y. Sector and Channel	1
10	908256-4	Bolt Hex 3/4-16 x 3 1/2	1
11	915640-4	Nut 3/4-16 Elastic Stop	1
12	5117	Spring — Trip Return	2
13	5125	Lug	4
14	5120	Rod — Trip Pivot	2
15	933512-4	Hair Pin Cotter	7
16	933505-4	Hair Pin Cotter	1
17	5331	Ass'y. Lift Bar	1
18	3770	Plate — Index	1
19	908034-4	Bolt Hex 3/8-16 x 1	1
20	3771	Rod — Lower Index	1

Ref. No.	Part No.	Description	No. Req'd.
21	920009-4	Washer 3/8 SAE	3
22	5329	Rod — Upper Index	1
23	5330	Lever — Index	1
24	915238-4	Nut — Hex 1/2-13 Jam	1
25	908057-4	Bolt Hex 1/2-13 x 1	1
26	5359	Grip	1
27	4564	Rod — Lower Pivot	1
28	4594	Rod — Blade Control	1
29	4944	Plug Button	2
30	5107	Ass'y. Lever	1
31	908005-4	Bolt Hex 1/4-20 x 1	1
32	915111-6	Nut — Nylon 1/4-20	1
33	5145	Ass'y. Bracket — Mounting	1
34	5135	Plate — Latching R.H.	1
35	5136	Plate — Latching L.H.	1
36	908036-4	Bolt Hex 3/8-16 x 1 1/2	2
37	1336	Washer — Dome	2
38	3697	Link	2
39	900072-4	Bolt — Carriage 3/8-16 x 3 1/4	4
40	5604	Decal — Attachment	1