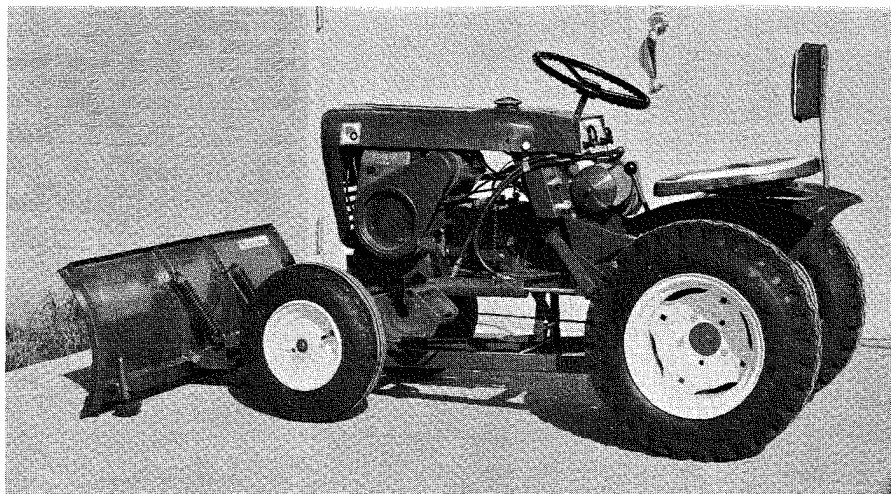


## PARTS LIST AND INSTRUCTIONS



# DOZER BLADE BD-4262



### ASSEMBLY AND MOUNTING

1. Assemble rear mounting brackets, parts #2374 and #2375 using  $\frac{3}{8}$ " x  $2\frac{5}{8}$ " bolts, part #2279 and the mounting bars, part #2277.

2. Slide frame, part #2282, under tractor and bolt to mounting brackets with  $\frac{1}{2}$ " x  $1\frac{5}{8}$ " shoulder bolts, part #2380.

3. Hook lift link to the second hole in the tractor lift, and fasten with the lift lever pin, part #2283 and the hair pin cotter, part #1290.

4. Fasten the front mounting bracket, part #2284, to the frame with the  $\frac{3}{4}$ " x  $3\frac{3}{4}$ " bolt, part #1334, and tighten castle nut, part #1010, until snug. Insert cotter pin through castle nut to lock.

5. Mount blade to frame using the shoulder bolts, part #2278, and the spring hook assembly, part #2144. (The blade may be tilted to the desired angle by installing the spring hook assembly in the various mounting holes in the blade assembly.)

6. Fasten pivot rod, part #2376 to turn lever and to front mounting bracket using cotter pins, part #1002.

7. The skids, part #2399, on each side of the blade must be adjusted before operation. This is accomplished by loosening the set screws, adjusting to the desired position, and tightening again. The purpose

of the skids is to keep the blade from catching on cracks in the walk or drive, and to allow it to float over uneven surfaces. (This dozer is equipped with a spring trip device. If the blade should strike a solid object it will tilt forward and slide over without jarring the operator.)

8. A light grade of machine oil should be applied to all moving parts, before operation, and after every 10 hrs. of use.

### OPERATION

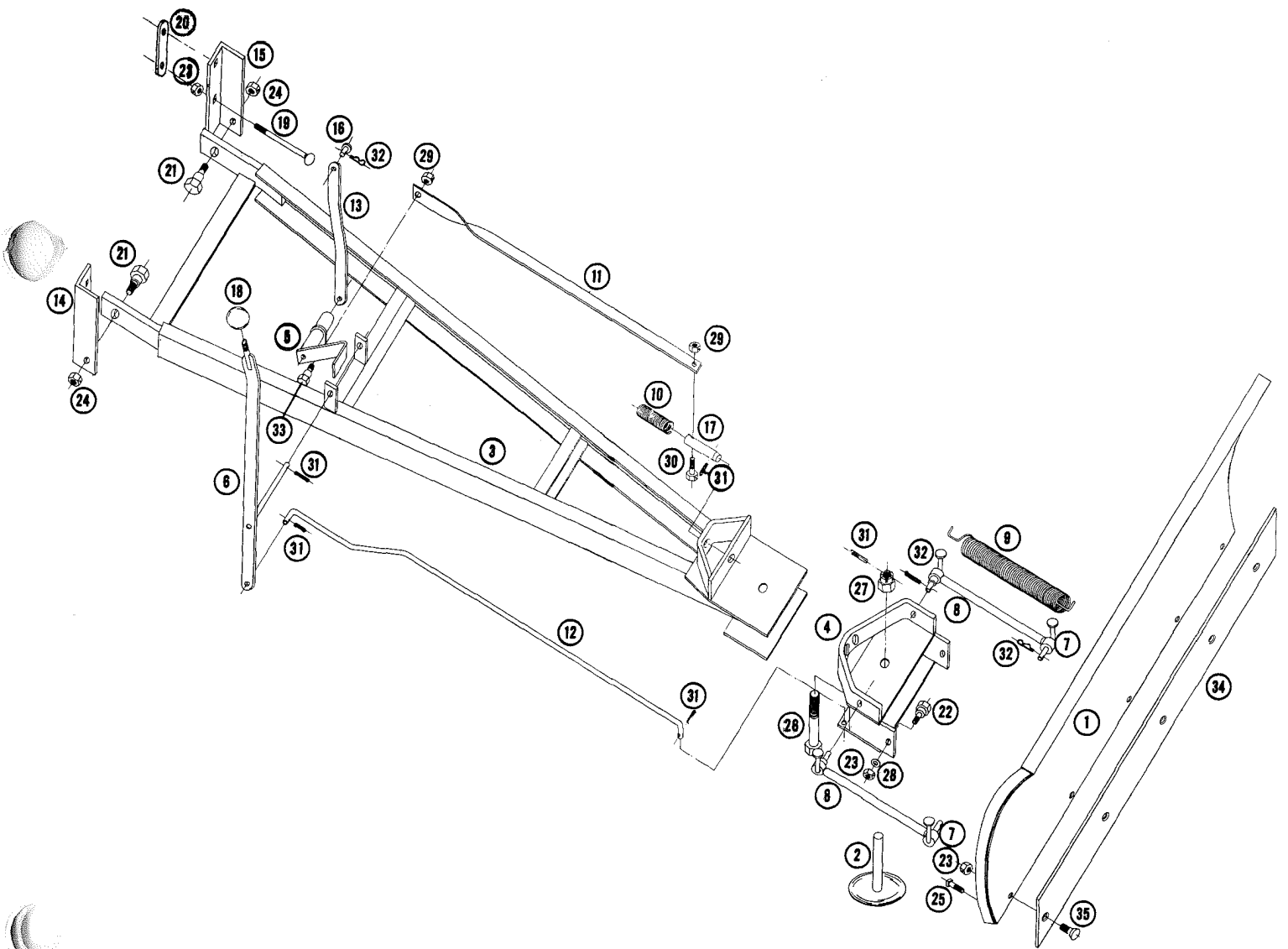
The dozer blade is adjustable and may be locked in three different positions, straight, right angle, and left angle. These adjustments are easily accomplished from the tractor seat. Simply depress the dozer foot pedal release (on the right side) and move to the desired position with the turn lever. Release pedal to lock in position.

The tractor lift lever (on the left side of the tractor) is used to lock the blade in the up position. The dozer blade is free floating when in the down position. When necessary, hand pressure may be applied by pushing the lift lever forward.

**(CAUTION)** Do not hit solid objects with the corners of the blade as this could result in damage.)

BD-4262 DOZER BLADE

Ref. No.	Part No.	Parts Description	No. Required	Ref. No.	Part No.	Parts Description	No. Required
1	2285	Blade Assy. W/A	1	19	2279	Carriage Bolt	4
2	2399	Skid Assy. W/A	2	20	2277	Mounting Bar—rear	2
3	2282	Frame W/A	1	21	2380	Shoulder Bolt	2
4	2284	Mounting Bracket—Front W/A	1	22	2278	Shoulder Bolt	2
5	2372	Foot Pedal Release W/A	1	23	1408	Nylock Nut, 3/8-16	11
6	2379	Turn Lever Assy. W/A	1	24	1410	Nylock Nut, 1/2-13	2
7	2140	Inside Spring Retainer W/A	2	25	1161	Sq. Hd. Set Screw	2
8	2144	Spring Hook Assy. W/A	2	26	1334	Hex Hd. Cap Screw 3/4-16 x 3 3/4	1
9	2143	Tension Spring	2	27	1010	Hex Hd. Castle Nut 3/4-16	1
10	2354	Spring	1	28	1018	Flat Washer, S.A.E.	2
11	2373	Bar-Trip	1	29	1406	Nylock Nut 1/4-20	1
12	2376	Pivot Rod	1	30	1221	Hex Hd. Cap Screw	1
13	2377	Lift Bar	1	31	1002	Cotter Pin, 1/8 x 1	4
14	2374	Mounting Bracket—Rear R.H.	1	32	1290	Hair Pin Cotter	5
15	2375	Mounting Bracket—Rear L.H.	1	33	2391	Shoulder Bolt	1
16	2283	Pin-Lift Lever	1	34	2346	Wear Plate	1
17	2353	Index Pin	1	35	1251	Carriage Bolt 3/8-16 x 3/4	5
18	1001	Knob	1				



---

Wheel Horse Service Bulletins 1961 - 1990: **#26** Issued: November 29, 1961

## Engineering Changes

[Previous](#)   [Table of Contents](#)   [Next](#)

---

### TO OUR DISTRIBUTORS & DEALERS

1. A POSITIVE TURNING STOP #4447 HAS BEEN ADDED TO THE RIGHT HAND STEERING ARM #3919 ON ALL TRACTORS.
  
2. BEGINNING WITH SERIAL NO. 2856, A NEW GEAR SHIFT LEVER #4440 IS BEING INSTALLED ON ALL MODEL 552 AND 702 TRACTORS. THIS WILL ELIMINATE THE NECESSITY OF BENDING THE PREVIOUS SHIFT LEVER, #4215 IN THE EVENT THAT A HYDRAULIC UNIT KIT, HY-2 IS INSTALLED.
  
3. A PLASTIC STRIP, #4443, HAS BEEN ADDED TO THE LEFT EDGE OF THE HOOD ON THE MODEL 502 BEGINNING WITH SERIAL NUMBER 2741.
  
4. BEGINNING WITH SERIAL NO. 2623, A CAST IRON PLUNGER ASSEMBLY, #4438 REPLACED THE #4243 LOWER PLUNGER ASSEMBLY. PLUNGER, 4439 REPLACED THE #3987 PLUNGER ROD. THE TWO NEW PARTS, #4439 AND #4438 ARE NOT INTERCHANGEABLE WITH THE PREVIOUS PARTS, #4232 AND #3987 INDIVIDUALLY. THEY MUST BE REPLACED IN SETS. 1-#1242 ROLL PIN IS REQUIRED TO INSTALL THE NEW PLUNGER SYSTEM.

### CORRECTIONS AND ADDITIONS

THE INSIDE SPRING RETAINERS AND THE SPRING HOOK ASSEMBLIES ON THE BD-4262 DOZER BLADE MUST BE ORDERED IN RIGHTS OR LEFTS, THERE FORE, PLEASE NOTE THE FOLLOWING ON YOUR PARTS LISTS.

#2133-INSIDE SPRING RETAINER R.H.  
 #2140-INSIDE SPRING RETAINER L.H.  
 #2144-SPRING HOOK ASSEMBLY L.H.  
 #2145-SPRING HOOK ASSEMBLY R.H.

### PRICE ADDITIOINS

#4447-STEERING STOP	N/C
#4440-SHIFT LEVER	\$2.10
#4443-PLASTIC STRIP	N/C
#4438-LOWER PLUNGER ASSY.	.65
#4439-PLUNGER ROD	.65

WHEEL HORSE PRODUCTS, INC.

PARTS & SERVICE DEPARTMENT

JDW:csu

NOTE: OUR DEALERS SHOULD HAVE THE FOLLOWING Bulletins No's. 11, 12, 13, 19, 21, 23, AND 26.